



HP ALM – External users – log on

Log on for external users:

1. Open <https://alm.ihelse.net/> in Internet Explorer (IE is the only browser supported)
2. Log in:

- «RSA passcode» consists of a PIN-code you have created yourself earlier + 6 digits from the app/code generator /SMS.
 - *Example:*
 - If your PIN is **1234** and the app/code generator gives you the code **265443**, your RSA-passcode becomes **1234265443**.
 - If you have not set up 2-factor log on, you have to follow this guide: <https://helse-vest-ikt.no/Documents/RSA%20token%20english.pdf>
3. In the next screen you enter the password connected to your user-id (AD account):

4. First time you open HP ALM from a new machine a client will be installed. If this does not succeed, follow the description in chapter [«Installation»](#) below.
5. When the client is installed, the following screen will appear:

hp **Application Lifecycle Management**

Name:

Password:

Automatically log in to my last domain and project on this machine

Authenticate

Domain: TEST

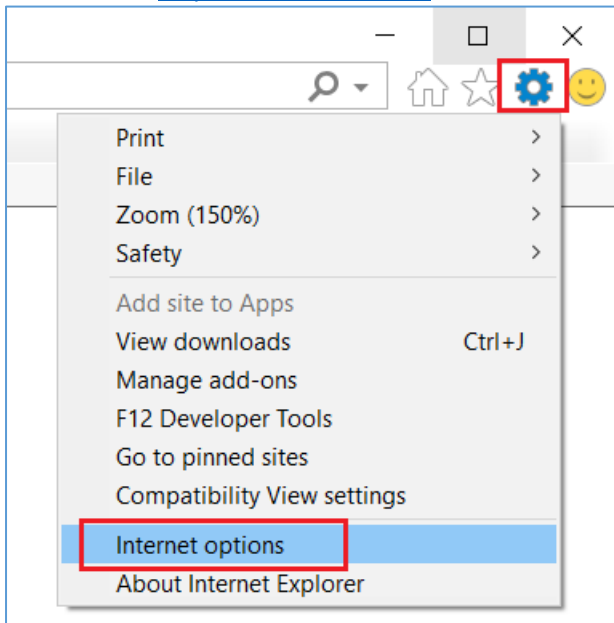
Project: Script_testing

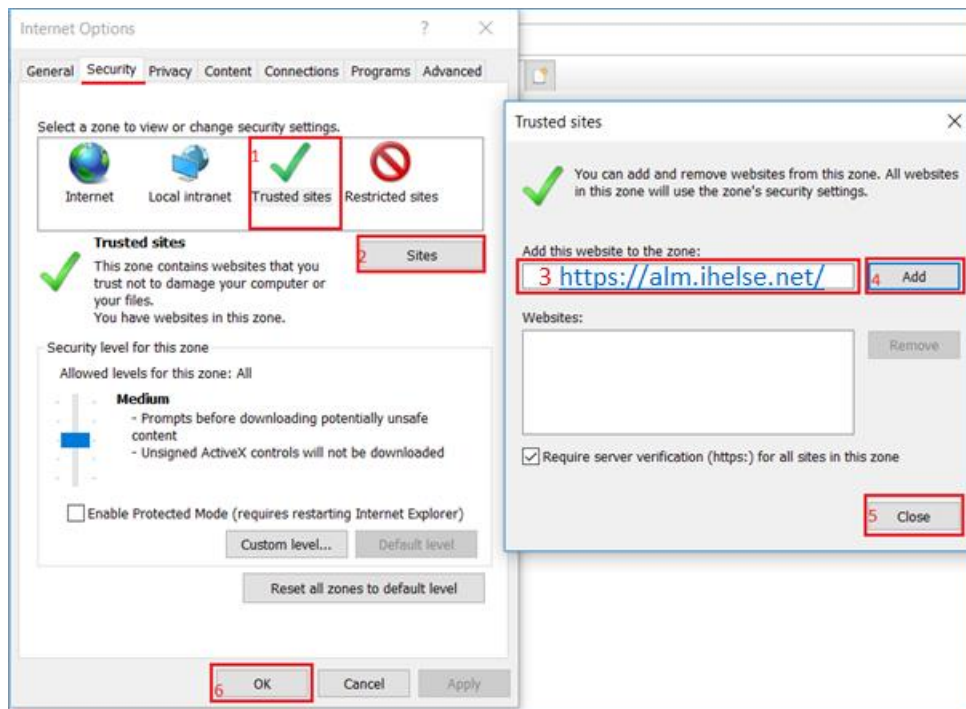
Login

- Enter your user-id and password. These are the same as you just entered. Then press «Authenticate».
- If you only have access to one project, it will be shown in Domain and Project. If not, you must select project.
- Press «Login».

Installation

1. Add the URL <https://alm.ihelse.net/> in trusted sites in Internet Explorer:





- Close Internet Explorer
 - Open Internet Explorer
 - Go to <https://alm.ihelse.net/>
2. If you are asked about user name and password before the installation starts, you probably don't have the necessary authorization to install the client. In this case contact your local help desk connected to your own company.